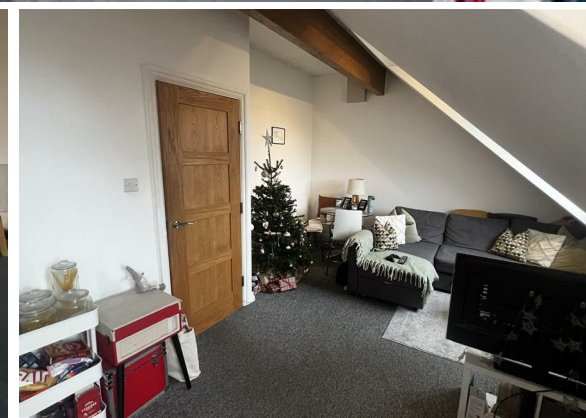


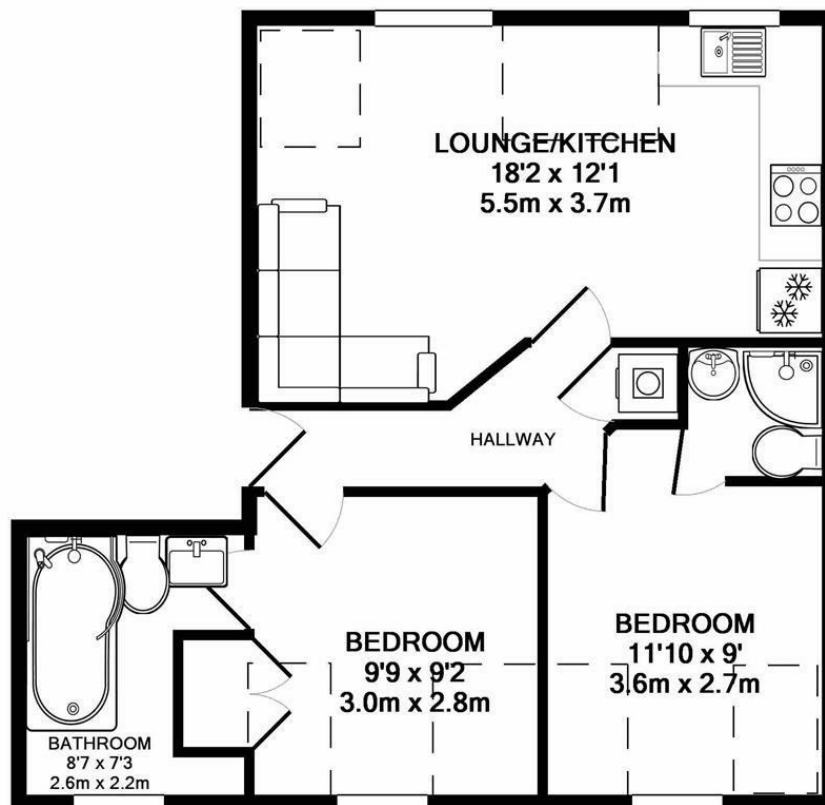


**2 Bed  
Flat  
located  
in Didsbury**

£1,350 Per Month



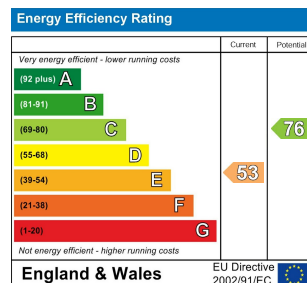
**STANTON**  
PROPERTIES



TOTAL APPROX. FLOOR AREA 508 SQ.FT. (47.1 SQ.M.)

Whilst every attempt has been made to ensure the accuracy of the floor plan contained here, measurements of doors, windows, rooms and any other items are approximate and no responsibility is taken for any error, omission, or mis-statement. This plan is for illustrative purposes only and should be used as such by any prospective purchaser. The services, systems and appliances shown have not been tested and no guarantee as to their operability or efficiency can be given

Made with Metropix ©2016



## DIRECTIONS

## CONTACT

31 Barlow Moor Road  
Didsbury  
Manchester  
M20 6TW

E: [office@stantonproperties.co.uk](mailto:office@stantonproperties.co.uk)  
T: 01614345307

